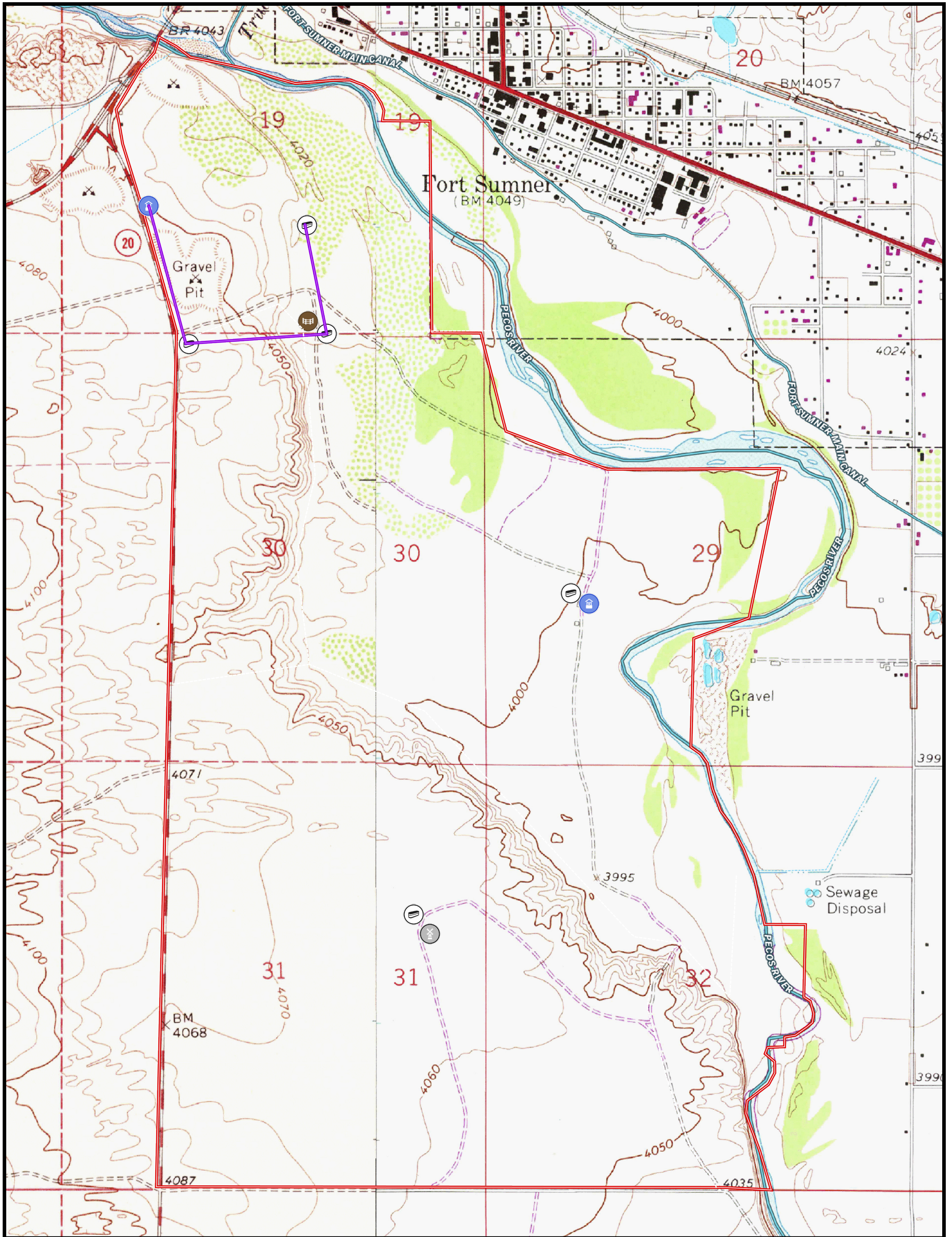


Pecos Bosque Ranch

2,020± | Fort Sumner, New Mexico | De Baca County

Chas. S. Middleton

AND SON LLC
FARM - RANCH SALES AND APPRAISALS
est. 1920



- Windmill
- Pens
- Well
- Trough
- Fence
- Pipeline
- Stream Intermittent
- River/Creek
- Water Body

Dwain Nunez
(505) 263.7868
dwain@csmanson.com

James (Jim) Welles
(505) 967.6562
jim@csmanson.com

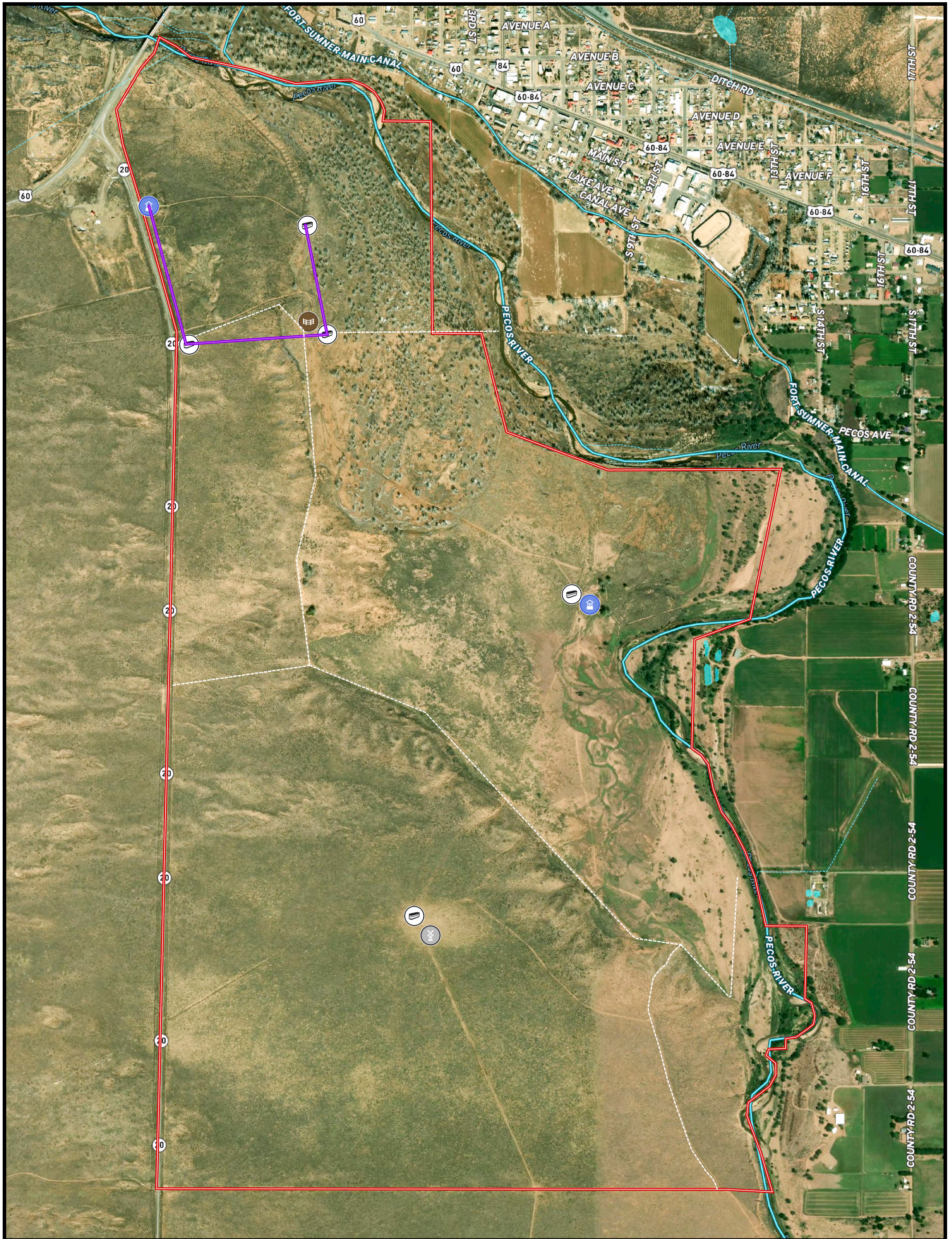
Chas. S. Middleton and Son, LLC
5016 122nd Street Lubbock, TX 79424
(806) 763-5331
www.chasmiddleton.com

Pecos Bosque Ranch

2,020± | Fort Sumner, New Mexico | De Baca County

Chas. S. Middleton
AND SON LLC

FARM - RANCH SALES AND APPRAISALS
est. 1920



- Windmill
- Pens
- Well
- Trough
- Fence
- Pipeline
- Stream Intermittent
- River/Creek
- Water Body

Dwain Nunez
(505) 263.7868
dwain@csmanson.com

James (Jim) Welles
(505) 967.6562
jim@csmanson.com

Chas. S. Middleton and Son, LLC
5016 122nd Street Lubbock, TX 79424
(806) 763-5331
www.chasmiddleton.com