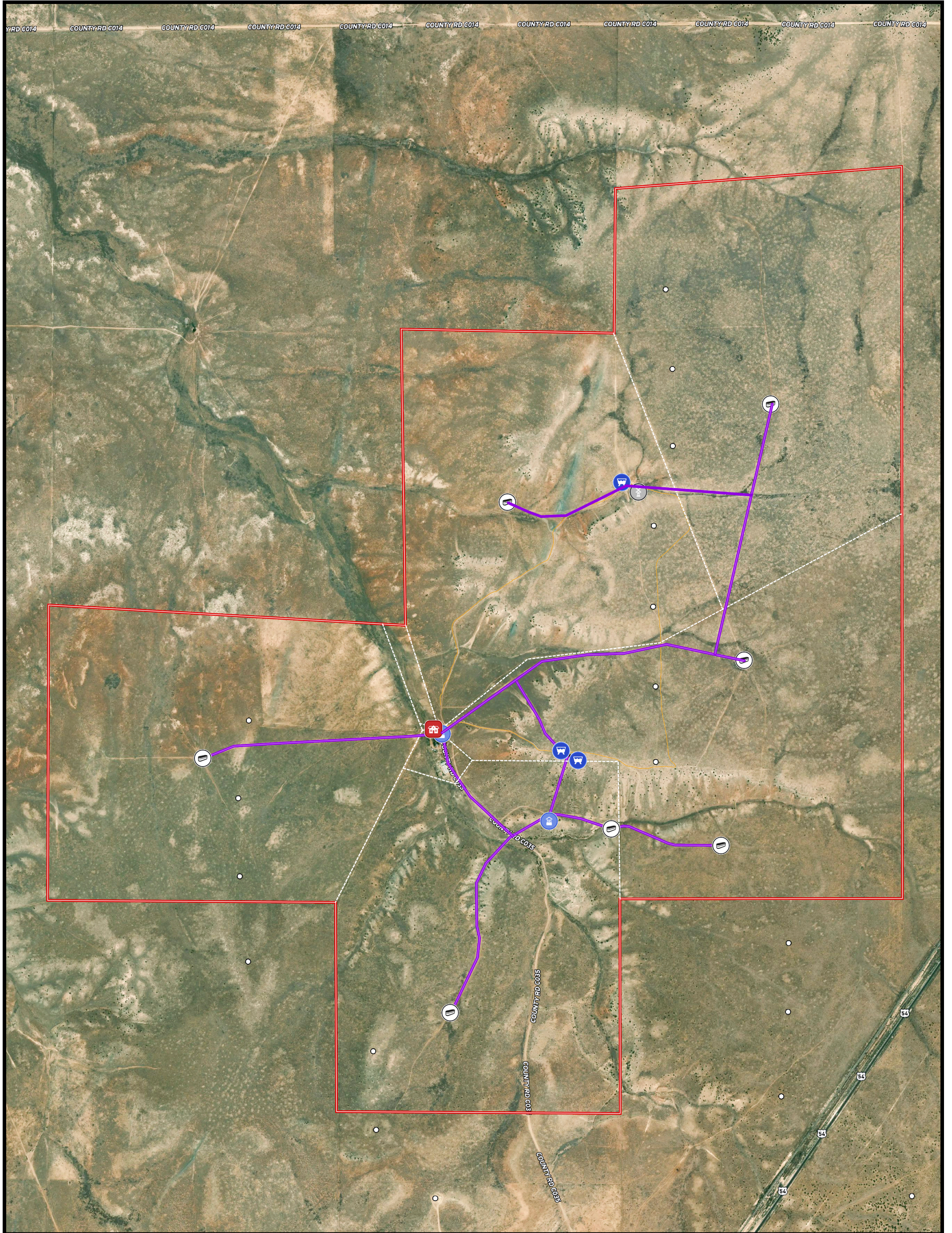


L6 Cattle Ranch

3,847± | Corona, New Mexico | Torrance County

Chas. S. Middleton

AND SON LLC
FARM - RANCH SALES AND APPRAISALS
est. 1920



- Main House
- Windmill
- Trough
- Well
- Water Storage Tank
- Fence
- Pipeline
- Track
- Wind Turbines (permitted)

Dwain Nunez
(505) 263.7868
dwain@csmanson.com

James (Jim) Welles
(505) 967.6562
jim@csmanson.com

Chas. S. Middleton and Son, LLC
5016 122nd Street Lubbock, TX 79424
(806) 763-5331
www.chasmiddleton.com

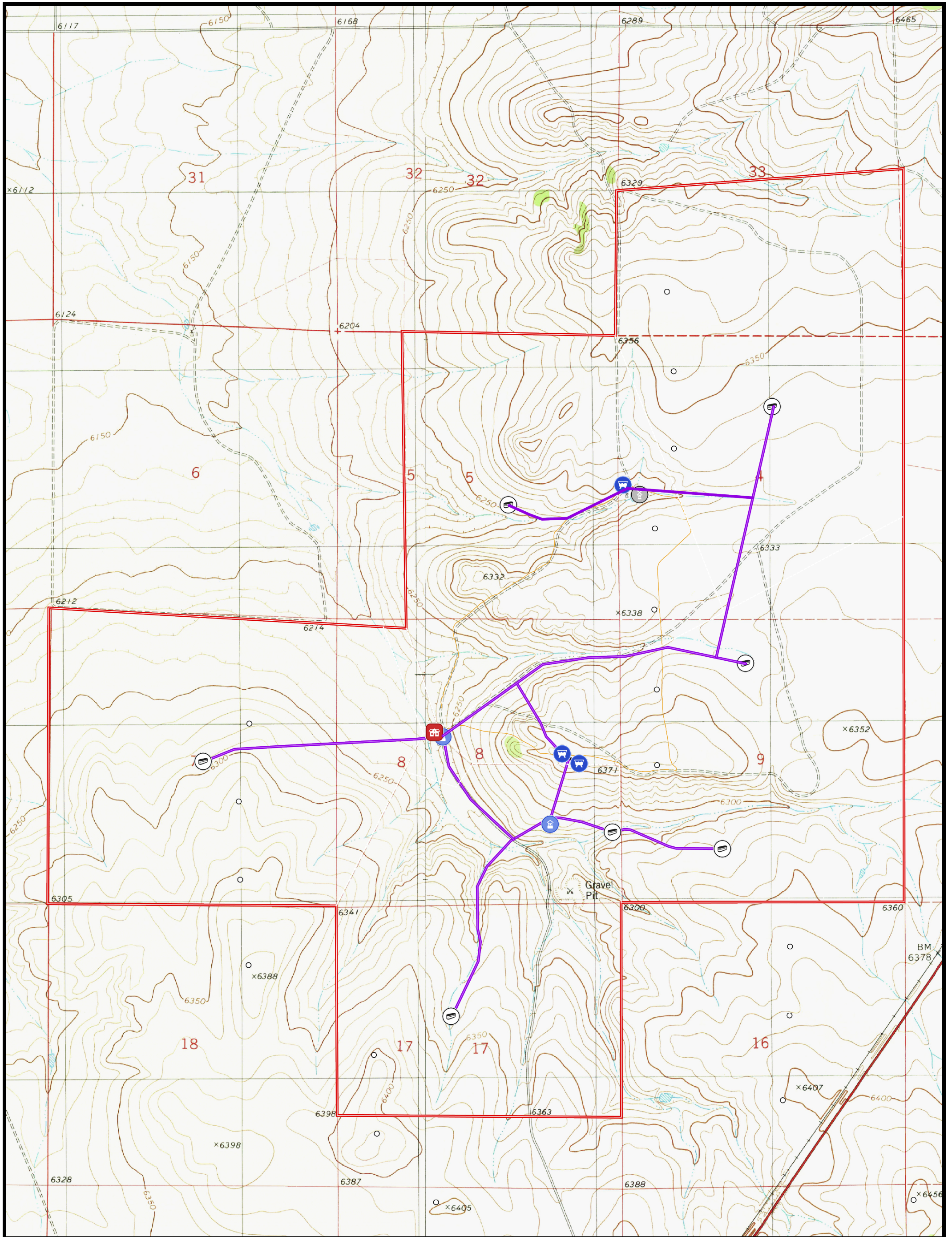
L6 Cattle Ranch

3,847± | Corona, New Mexico | Torrance County

Chas. S. Middleton

AND SON LLC

FARM - RANCH SALES AND APPRAISALS
est. 1920



- Main House
- Windmill
- Trough
- Well
- Water Storage Tank
- Fence
- Pipeline
- Track
- Wind Turbines (permitted)

Dwain Nunez
(505) 263.7868
dwain@csmanson.com

James (Jim) Welles
(505) 967.6562
jim@csmanson.com

Chas. S. Middleton and Son, LLC
5016 122nd Street Lubbock, TX 79424
(806) 763-5331
www.chasmiddleton.com