

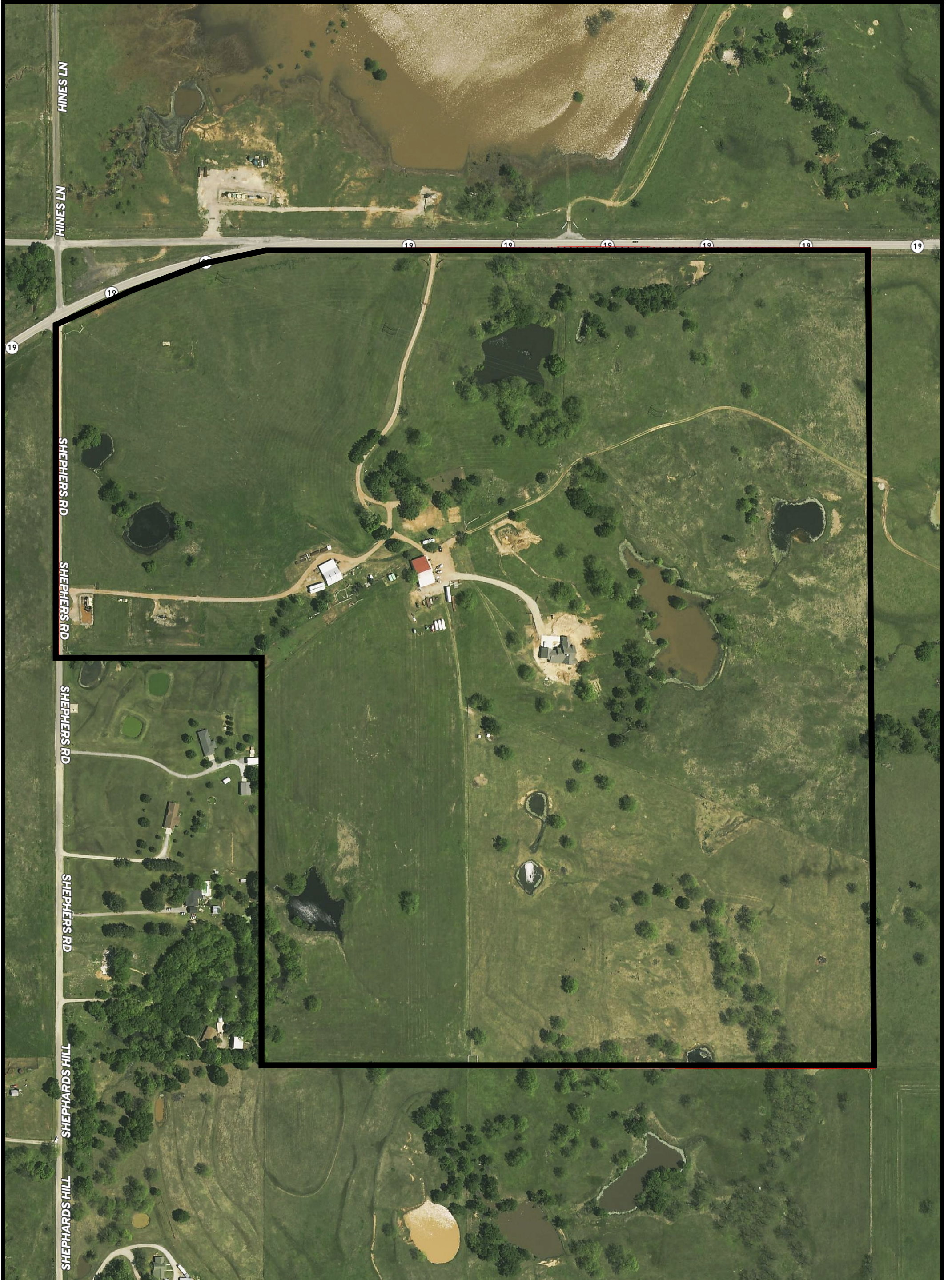
Henrie Ranch

140± acres | Garvin County, Oklahoma

Chas. S. Middleton

AND SON LLC

FARM - RANCH SALES AND APPRAISALS
est. 1920



Brendan Garrison

(806) 790.5900

brendan@csmanson.com

Chas. S. Middleton and Son, LLC
5016 122nd Street Lubbock, TX 79424

(806) 763-5331

www.chasmiddleton.com